



# TAITO CITY LIFE NEWS

2025.09 Vol. 40

Published by: Human Rights and Diversity Promotion Section, General Affairs Division, Taito City Office  
4-5-6 Higashi-Ueno, Taito-ku 110-8615, Tel: 03-5246-1116

[https://www.city.taito.lg.jp/kurashi/foreigner/jigyoannai/life\\_news.html](https://www.city.taito.lg.jp/kurashi/foreigner/jigyoannai/life_news.html)

The City Office offers multilingual interpretation services via tablet devices. Please inquire about this at the service window you visit for procedures.

The hours these services are available differ depending on the language.

<https://www.city.taito.lg.jp/kurashi/foreigner/sodan/sodan.html>

Supported languages: English, Chinese, Korean, Spanish, Portuguese, Vietnamese, Nepali, Filipino (Tagalog), Thai, French, Russian, Hindi, Indonesian, Khmer, Burmese and Malay.



Please check the hours these services are available here



## Undergo Health Checkups and Cancer Screenings

It is vital to undergo regular checkups to protect your health. The city conducts health checkups and cancer screenings.

The types of checkups you can receive differ according to your health insurance plan and age. Please check the following table or access the website using the 2-D code at right to see which checkups you are eligible for.



You can also access the website by scanning this code.

### 1. Receive Health Checkups

Checkup name	Eligibility	Where to make reservations
Comprehensive health checkup	Residents 40 years old and older who are enrolled in Taito City National Health Insurance, the Latter-Stage Elderly Health Care System, or are receiving public welfare assistance for everyday living (checkup tickets will be sent to those who are eligible).	Designated medical institutions in the city
Public health exams	Residents of the city who are 15 years of age and older but under 40 that do not have the opportunity to receive a health checkup	Health Service Section Call or apply online on the website
Basic dental checkup / dental checkups for those 20 years of age	City residents who are 20, 30, 35, 40 to 55, 60, 65, 70, 75, 80 and 85 years of age (Notifications will be sent to all those eligible.)	Designated medical institutions in the city
Glaucoma checkup	Residents who are 60 years of age as of March 31, 2026	Designated medical institutions in the city

### 2. Receive cancer checkups (early detection and treatment is the key)

Checkup name	Eligibility	Where to make reservations
Stomach cancer screenings	City residents 50 years of age and older who will be an even-numbered age on March 31, 2026	Designated medical institutions in the city
Lung cancer screenings	City residents 40 years of age and older Note: Can be received along with the comprehensive health checkup	
Colorectal cancer screenings		
Cervical cancer screenings	Female city residents 20 years of age and older who will be an even-numbered age on March 31, 2026	
Breast cancer screenings	Female city residents 40 years of age and older who will be an even-numbered age on March 31, 2026	

**Note:** A notification and checkup ticket will be sent to all those eligible. Please note that the period will vary depending on the checkup.

**Inquiries:** Health Service Section, **Tel:** 03-3847-9481

## About the Medical Subsidies for Children Program

### (乳) 'Infant-Toddler' Medical Certificate/ (子) 青 Children's Medical Certificate)

#### **[What is the Medical Subsidies for Children program?]**

Taito City provides subsidies for the portion of medical expenses residents must pay to medical institutions for children between birth and the third year of high school (until the first March 31 after the child turns eighteen) when they receive treatment.

Note: No subsidies are provided for treatments that health insurance does not cover.

#### **[To receive this medical expense subsidy]**

Bring a document that indicates your child's health insurance enrollment status (such as a copy of qualification certificate, copy of qualification status notification, or qualification status page from Myna Portal) to the city office to apply. A medical certificate will be issued for your child after eligibility is confirmed.

#### **[Receiving Treatment at Medical Institutes]**

Receiving treatment within Tokyo: Present your child's medical certificate along with information on your child's

health insurance status at the medical institute's service window when you visit a doctor. Taito City will pay the cost of treatment that health insurance covers, so there is no need to pay at the service window.

Receiving treatment outside of Tokyo or overseas: Please pay the personally-borne amount at the medical institute's service window, then file an application for reimbursement with the city office. Once your application is approved, you will be sent the subsidy for the personally-borne amount via bank transfer.

#### **[Valid Period]**

These medical certificates are valid until September 30 of every year, and will be renewed every October 1 (the color will change). If your child already has a medical certificate, you do not need to reapply for one.

**Inquiries:** Benefits Subsection, Child-Rearing & Youth Support Section

**Tel:** 03-5246-1232

## Higher Vocational Training Promotion Loan Program for Single-Parent Households: Residential Support Funds

This program offers interest-free loans for rent money to single parents who want to find a job or switch jobs to increase their earnings.

**Note:** Individuals who find a job or switch to a job that pays more than their old one within one year of receiving the loan, work in said workplace continuously for one year, and complete a prescribed procedure will be exempt from repaying the loan.

#### **Residential Support Funds:**

Maximum loan amount: 70,000 yen per month

Maximum loan period: Twelve months

This program can be used in conjunction with other programs (Housing Support Benefits, etc.)

#### **Eligibility:**

- (1) Individuals receiving child support allowances
- (2) Individuals who have received program creation support

from the Child-Rearing & Youth Support Section of the city office

- (3) Individuals in one of the four situations noted below:

1. Currently unemployed and looking to find work
2. Looking to switch to a job with a higher salary
3. Looking to obtain a higher salary from his/her current workplace (working longer hours, receiving compensation for gaining qualifications, etc.)
4. Looking to switch to a job that leads to more stable employment (e.g., switching from day labor to a permanent position, etc.)

There are other conditions that must be met. Please call the number below for more information.

#### **Inquiries:**

Daily Life Support Desk, Taito City Council of Social Welfare

**Tel:** 03-5828-7547

## Higher Vocational Training Promotion Loan Program for Single-Parent Households

Interest-free loans are available to single parents to help them pay the entrance fees for vocational schools and to prepare for finding employment after they acquire qualifications.

**Note:** If you find a job in Tokyo that requires the qualification you acquired within one year of acquiring it, and continue to work in that job for five years, you will be exempt from repaying the loan after completing a certain procedure.

**Entrance fees:** Up to 500,000 yen (covers admission fees, learning materials, transportation, etc.)

**Employment preparation fees:** Up to 200,000 yen (covers fees for moving, uniforms, work supplies, etc.)

**Eligibility:** Single parents who are raising a child under twenty years of age (must meet the requirements below).

- (1) Individuals who receive the Taito City training promotion allowance
- (2) Individuals who are expected to be exempt from repaying the loan (please see the note at left)

There are other minor requirements, so please contact the city office for more information.

**Inquiries:** Daily Life Support Desk, Taito City Council of Social Welfare

**Tel:** 03-5828-7547



## Ask Questions 24/7!

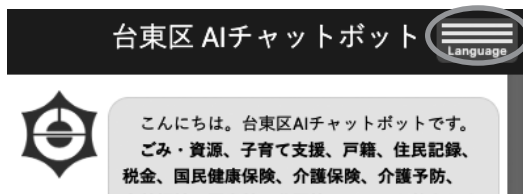
### ► Try the AI Chatbot

#### How to Use

- (1) Click the mark at the bottom right of the Taito City website.



- (2) Click the "Language" button on the upper right of the page that opens. Choose your preferred language.



- (3) Ask a question.

**Languages available:** English, Chinese (simplified and traditional), Korean, Vietnamese, Filipino (Tagalog), Nepali, Thai, French, Burmese, Uzbek, Indonesian, Russian, Mongolian, Ukrainian

**Inquiries:** Public Relations Section

**Tel:** 03-5246-1023

## Please Have a Look at the Taito City Newsletter



Various notifications from the Taito City Office are written in the Taito City newsletter.

The newsletter can be viewed in various languages, such as English, Chinese (simplified and traditional),

Korean, Thai, and Indonesian if viewed from the city website or smartphone application "Catalog Pocket."

**Note:** To read via Catalog Pocket, search for "Taito City" after scanning the two-dimensional code and downloading the app.

#### Inquiries:

Public Relations Section

**Tel:** 03-5246-1021



Android



iOS

## Taito City's Website Is Viewable in Various Languages

The Taito City website can be viewed in 109 languages.

**Languages:** English, Chinese (simplified and traditional), Korean, French, Indonesian, Malay, Thai, etc.

#### ► Procedure

1. Click the "Foreign Language" button on the upper right side of the website



2. Choose a language

**Inquiries:** Public Relations Section,

**Tel:** 03-5246-1021




## View the Taito City Official YouTube Channel

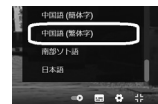
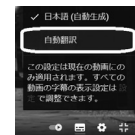
The public relations programs (news) and other videos the city produces are streaming on YouTube. You can display subtitles using YouTube's automatic translation function:



- (1) Click on the caption  button on the bottom right of the video.



- (2) Click on the  button, click on "Subtitles/CC," and then select "automatic translation" and choose a language.



#### Notes:

1. Only English-language translations are available when playing videos on smartphones and the like.
2. Since the channel uses YouTube's automatic translation function, the translation may not be accurate.
3. Depending on the video, the automatic translation function may not be available.

**Inquiries:** Public Relations Section, **Tel:** 03-5246-1041

## Service Counters Open on Second Sundays for Partial Services

**Hours:** 9 a.m. to 5 p.m.

**Location:** Taito City Office 1F

**Services available:**

- Matters related to family registry notifications
- Issuance of residence records, personal seal registration certificates, and family registry certificates
- Matters related to notifications of moving in/out and National Health Insurance enrollment
- Matters related to personal seal registration and annulment
- Payments for taxes or health insurance premiums and matters related to motorcycle registration
- Matters related to various childrearing allowances and medical subsidies for children
- Matters related to applications for and issuance of Individual Number cards
- Matters related to applications for and issuance of special permanent resident certificates
- Consultation on tax payments and health insurance premiums
- Matters related to issuance of residence tax (tax exemption) certificates
- Matters related to issuance of a *Mother and Child Health Handbook*
- Sales of one-month ticket, coupon tickets and one-day ticket for the Taito City Circular Route Bus, Megurin

## Searching for a Hospital?

### ◆ Phone

You can search for a hospital through Himawari—the Tokyo Metropolitan Health & Medical Information Center.

**Languages:** English, Chinese, Korean, Thai and Spanish

**Hours:** 9 a.m. to 8 p.m. **Tel:** 03-5285-8181

### ◆ Online

You can search for a hospital through the Medical Information Net (NABII).

(Available in English, Chinese and Korean.)  
<https://www.iryuu.teikyouseido.mhlw.go.jp>



You can also access the website by scanning this code.

## Taito City Night & Holiday Children's Clinic

Medical treatment is available for children fifteen years of age or younger for sudden illnesses that can be handled without hospitalization.

**Location:** Inside Eiju General Hospital, 2-23-16 Higashi-Ueno, Taito-ku

**Note:** Please come to the emergency reception desk on the first floor.

**Tel:** 03-3833-8381

**Note:** Since you may be directed to a specialized medical facility, please be sure to call in advance.

**Hours:**

- Monday through Saturday (except on national holidays and during the yearend/New Year's holidays): 6:45 to 9:45 p.m. (treatment from 7 to 10 p.m.)
- Sundays, national holidays, *Obon* holidays (August 14–16), and during the year-end/New Year's holidays (December 29 to January 3): 8:45 a.m. to 9:45 p.m. (treatment from 9 a.m. to 10 p.m.)



You can also access the website by scanning this code.

## Some Service Counters Have Extended Hours on Wednesdays

**Extended hours:** Until 7 p.m.

**Available service counters:**

Taito City Office (4-5-6 Higashi-Ueno, Taito-ku)

1F: ○ Family Registration Residents' Service Section

2F: ○ Nursing Care Insurance Section

○ Senior Citizens' Welfare Section

○ Handicapped Welfare Section

○ National Health Insurance Section

3F: ○ National Pension Subsection, Residents' Affairs Section

○ Collection Section ○ Tax Administration Section

6F: ○ Child-Rearing & Youth Support Section

○ After-School Affairs Subsection ○ Child Care Section

**Residents' Offices**

○ Seibu (West) Residents' Office (3-1-30 Shitaya, Taito-ku)

○ Nambu (South) Residents' Office (1-10-12 Kotobuki, Taito-ku)

○ Hokubu (North) Residents' Office (4-48-1 Asakusa, Taito-ku)

## Those Who Want to Study Japanese

There are volunteer groups in Taito City that will help you study the Japanese language. You don't need to register or make a reservation; just check the schedule and show up at the time and place the group is meeting. For more information, please visit the city website.

**Note:** We are also recruiting Japanese-language instructors and other staff.



Please scan this code for more details.

## Consultation about Life in Japan

### ► Foreign Residents' Consultation Center

If you have any problems or concerns, please feel free to consult the Foreign Residents' Consultation Center.

You can talk to a consultant directly on the following days.

Language	Days	Hours
Chinese	First, second and third Thursdays	10 a.m. to noon
English	First and third Thursdays	10 a.m. to noon
Korean	First and third Thursdays	2 to 4 p.m.

**Location:** Residents' Consultation Office (Taito City Office 1F)

**Inquiries:** Residents' Consultation Office, Residents' Counseling Section

**Tel:** 03-5246-1025

**Inquiry hours:** 8:30 a.m. to 5 p.m. except for Saturdays, Sundays, national holidays and during the year-end/New Year's holiday period (unless otherwise stated)



# Do You Know About the Nursing Care Insurance System?

Nursing care insurance is a system where the entire community supports each other to reduce the financial burden of people who require nursing care as well as their families. Those aged 40 and older enroll and pay the insurance premiums, and if nursing care is required, a portion of the costs are covered and services are provided.

## ○ Enrollees

Those aged 65 and older, as well as those from the ages of 40 to 64 that are enrolled in medical health insurance. As a general rule, foreigners who are registered residents of Taito City are required to enroll.

## ○ Insurance premiums

Nursing care insurance premiums for those aged 65 and older are determined by such things as their income situation, and are revised every three years. For those from the ages of 40 to 64, nursing care insurance charges will be added to the insurance premiums of

the medical health insurance that they are enrolled in. Insurance premiums vary according to enrolled medical health insurance.

## ○ Using nursing care services

Those aged 65 and older for whom it has been determined that nursing care and support is required, regardless of the cause, can use this service. For those from the ages of 40 to 64, services may be utilized if it has been determined that nursing care and support is required for specific illnesses such as cancer or cerebrovascular disease.

After you make application and become certified for nursing care and support, you can use services on the basis of a care plan created through consultation with a care manager, and a portion of costs are covered (10% to 30%).

**Inquiries:** Nursing Care Insurance Section  
**Tel:** 03-5246-1257

# Follow the Rules When Using Parks!

## 1 Do not litter



## 2 Ball sports are only permitted in the sports corner



## 3 Do not let your pets run freely, and always clean up after your pet



## 4 Do not feed pigeons, cats and other stray/wild animals



## 5 Do not make loud noises or talk loudly in the morning and at night



## 6 Fireworks, barbecues and other activities that require fire are not permitted



## 7 Smoking is prohibited in the children's playground and other areas where children gather



Please visit the website for more information

**Inquiries:** Park Section, **Tel:** 03-5246-1321



## Children's Clubs

Children's Clubs are places where elementary school students can spend time and play after school hours. They are open until 6 p.m. (until 7 p.m. for extended hours)

Elementary school students that are Taito City residents and have no parents/guardians to watch them after school are eligible. Applications for FY2025 are accepted at any time.

The capacity is set for each club. When there are no vacancies, children will be placed on a waiting list. Please inquire for more details.

**Inquiries:** After-School Affairs Subsection, Child Care Section

**Tel:** 03-5246-1235

## About Children Halls

Children halls are facilities for kids up to eighteen years of age and their parents/guardians that offer playrooms and library rooms. They're fun places to spend time together.

Opening hours are from 9:30 a.m. to 6 p.m.; closed on Sundays and national holidays (excluding May 5).

Name	Location	Telephone
Senzoku Children Hall	3-20-6 Senzoku, Taito City	03-3874-1714
Tamahime Children Hall	2-22-13 Kiyokawa, Taito City	03-3874-6571
Taito Children Hall	1-11-5 Taito, Taito City	03-3832-8493
Ikenohata Children Hall	2-3-3 Ikenohata, Taito City	03-3823-6644
Matsugaya Children Hall	4-15-11 Matsugaya, Taito City	03-3841-6734
Imado Children Hall	1-3-6 Imado, Taito City	03-3876-1656
Kotobuki Children Hall	1-4-5 Kotobuki, Taito City	03-3844-8602
Yanaka Children Hall	5-6-5 Yanaka, Taito City	03-3824-4043

**Inquiries:** After-School Affairs Subsection, Child Care Section, **Tel:** 03-5246-1235  
Children Division, Taito City Social Welfare Corp., **Tel:** 03-5603-2229



## Afterschool Children's Classrooms

Afterschool children's classrooms allow elementary school students to stay at school after class to study, play sports, etc. All students at schools that implement this program are eligible to participate.

The seventeen elementary schools at right conduct this program in the 2025 academic year.

### **[Time]**

End of classes to 4:45 p.m.; 8 a.m. to 4:45 p.m. during long school vacations such as summer vacations (schedule may differ at some schools).

### **[Use]**

Students must register in advance to use this program. Afterschool children's classrooms accept applications at any time.

### **[Fees]**

You must pay an insurance fee of 800 yen when applying. For more information, please contact the afterschool children's classroom at your child's elementary school.

### **[Inquiries]**

After-School Affairs Subsection, Child Care Section,  
**Tel.:** 03-5246-1235

### **[Elementary schools that implement the program and their contact numbers]**

Afterschool Children's Classroom	Phone
Ueno Elementary School Afterschool Children's Classroom	070-5266-8803
Heisei Elementary School Afterschool Children's Classroom	090-6012-0085
Negishi Elementary School Afterschool Children's Classroom	080-5192-7024
Tosen Elementary School Afterschool Children's Classroom	090-9219-3357
Shinobugaoka Elementary School Afterschool Children's Classroom	070-3297-6912
Yanaka Elementary School Afterschool Children's Classroom	080-7241-1945
Kuromon Elementary School Afterschool Children's Classroom	080-5435-9762
Taisho Elementary School Afterschool Children's Classroom	080-5435-9784
Asakusa Elementary School Afterschool Children's Classroom	090-1910-5358
Taito Ikuei Elementary School Afterschool Children's Classroom	080-5677-8619
Kuramae Elementary School Afterschool Children's Classroom	090-9630-0490
Higashi-Asakusa Elementary School Afterschool Children's Classroom	080-7087-1460
Fuji Elementary School Afterschool Children's Classroom	090-3782-1770
Matsuba Elementary School Afterschool Children's Classroom	080-5192-6884
Senzoku Elementary School Afterschool Children's Classroom	080-3529-0033
Ishihama Elementary School Afterschool Children's Classroom	070-5045-8035
Kinryu Elementary School Afterschool Children's Classroom	080-4859-2646