



TAITO CITY LIFE NEWS

2019.12 Vol. 17

Published by:

Residents' Affairs Section, Citizen's Division, Taito City Office, 4-5-6 Higashi-Ueno, Taito-ku 110-8615, Tel: 03-5246-1126

http://www.city.taito.lg.jp/index/kurashi/foreigner/life_news.html

The City Office offers multilingual interpretation services via tablet devices.

Please inquire at the service window about the procedures.

Supported languages: English, Chinese, Korean, Spanish, Portuguese, Vietnamese, Nepalese, Tagalog, Thai, French, Russian, and Hindi.



About Declaration of Resident Tax (special city tax and Tokyo metropolitan resident tax)

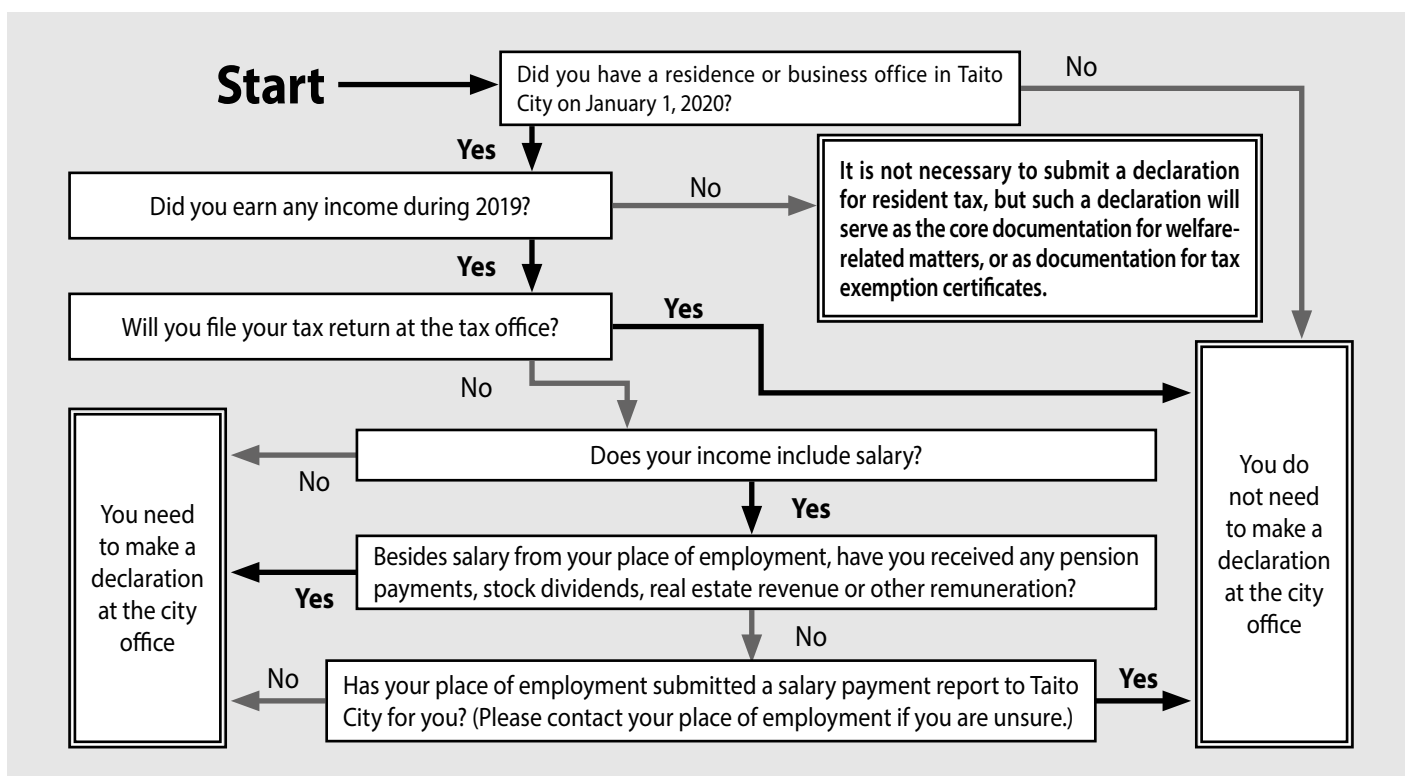
Your resident tax is the tax assessed by the city or municipality where you reside, and is the source of funding for administrative services the community conducts. All individuals having income of a certain level and above must pay tax.

Your resident tax is calculated on the basis of the income declaration form you submitted to the tax office or city office. Every year by March 15 you must submit a declaration of your income for the period from January 1 to December 31 of the previous year to the city or municipality where you resided on January 1 of that year.

Please note that if you submitted a declaration of your income tax to the tax office you are not required to submit a resident tax declaration.

The city will send a declaration form to individuals who must make a declaration to the city office at the beginning of February, so please fill in the necessary information and submit or mail it to the city office. Please contact the section/number noted below if you do not receive a declaration form, if you are unsure about how to fill in the form, or if any other points are unclear.

★Individuals who need to submit a declaration Please use the below chart as a reference



Inquiry: Taxation Subsection, Tax Administration Section, **Tel:** 03-5246-1103 to 1105

National Health Insurance Enrollment Procedures

Receive your health insurance card

- After you complete National Health Insurance enrollment procedures, the post office will deliver your health insurance card to your home. Please take delivery of your health insurance card directly from the mail carrier.
- Make sure to write the names of everyone living at the residence on your mailbox. If you live in an apartment/condominium, make sure that your room number is indicated on your mailbox.
- If you were not at home and could not receive your health insurance card, a delivery notice will be left in your mailbox. Please call the phone number written on the notice, or go to the post office to pick up your health insurance card.
- If you do not go to the post office during the holding period, your card will be sent to and held at the city office. Please make sure to pick it up there.

Send a notification if there are any changes, such as:

- When you move residences or return to your native country
- When you enroll in the health insurance plan at your place of work

Inquiries: Eligibility Subsection, National Health Insurance Section

Tel: 03-5246-1252

Pay your health insurance premiums

- After you complete enrollment procedures, payment slips stating your health insurance premiums will be mailed to your home. Please bring the payment slip with you and pay at a bank or convenience store by the deadline.
- If you are unable to pay your premiums for some reason, please consult the city office as soon as possible. If you do not, you may be unable to use your health insurance card.
- You can pay your health insurance premiums via bank transfer. Please inquire if you want to use this method.

Inquiries:

Health Insurance Premium Subsection, National Health Insurance Section

Tel: 03-5246-1256

Please Have a Look at the Taito City Newsletter



Various notifications from the Taito City Office are written in the Taito City newsletter. The newsletter can be viewed in various languages, such as English, Chinese (simplified and traditional), Korean, Thai, and Indonesian if viewed from the city website or smartphone application "Catalog Pocket."

Note: To read via Catalog Pocket, search for "Taito City" after scanning the two-dimensional code and downloading the app.

Inquiries: Public Relations Section

Tel: 03-5246-1021



iOS



Android

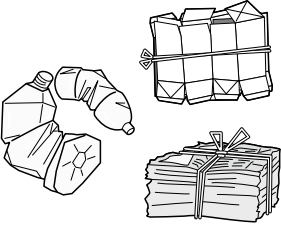
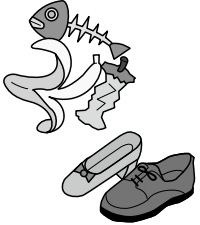

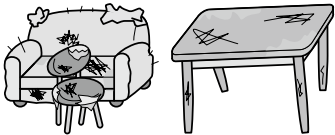
Follow the Garbage Disposal Rules!

► How to Dispose of Your Garbage

1. Separate your garbage into recyclable items, burnable garbage, unburnable garbage and large-sized garbage
2. Take your garbage out on the proper collection day, depending on the type of garbage and the region where you live
3. Bring your garbage to the designated location by the place you live by the designated time

Put your garbage out by 8 a.m. on the day of disposal. You cannot put it out the day before. Dispose of recyclable items at the collection area. Other types of garbage are collected individually at each building.

Note: Contact the Waste Collection Office to receive a garbage collection calendar.

 <p>Recyclable items</p>	 <p>Burnable garbage</p>	 <p>Unburnable garbage</p>	<p>Large-sized garbage Home appliances, furniture, etc.</p>  <p>You must apply with the Large-size Waste Reception Center</p>
--	--	--	---

► Fees

As a rule, recyclable items, burnable garbage and unburnable garbage from households are collected free of charge. However, if you dispose of four or more 45-liter bags of garbage at one time, you will be charged a fee for the fourth bag and any additional bags.

A fee will be charged for all recyclable items and garbage that stores and companies dispose of.

► Large-sized Garbage (from households only)

Oversized garbage is collected on a reservation basis, and fees are charged for pickup. You can make a reservation for this with the Large-size Waste Reception Center. Please make your reservation by telephone or via the Internet. Internet reservations can be made in Japanese, English, Chinese and Korean.

● Large-size Waste Reception Center

Tel: 03-5296-7000 (Monday through Saturday, 8 a.m. to 7 p.m.)

URL: <http://sodai.tokyokankyo.or.jp/>

Inquiries: About garbage, Taito City Waste Collection Office, **Tel:** 03-3876-5771

About recyclable items, Waste & Recycle Section, **Tel:** 03-5246-1291



Purchase Large-sized Garbage Disposal Tickets and attach them to your items before disposal.



You can also access the website by scanning this code.

About the Taito City Consumer Life Center

Ask for advice in these situations!

- If you have problems or suspicions when signing a contract or making a purchase
- If you are billed for something you didn't purchase
- If an accident occurs when using a product

● Who can use this service?

Anyone who lives, works or goes to school in Taito City

● Consultation days and hours

Monday through Friday
9 a.m. to 4 p.m.

● Consultation procedures

Call or come to the Taito City Consumer Life Center

Tel: 03-5246-1133

Location: Taito City Office 9F, Service Counter No. 7

● Consultation is free of charge. All matters are kept strictly confidential.

Inquiries: Residents' Counseling Section

Tel: 03-5246-1144

Service Counters Open on Second Sundays for Partial Services

Hours: 9 a.m. to 5 p.m.

Location: Taito City Office 1F

Available services:

- Matters related to family registry notifications
- Matters related to residence records, personal seal registration certificates and family registry certificates
- Matters related to notification of moving in/out, personal seal registration, and National Health Insurance enrollment
- Payments for taxes or health insurance premiums and matters related to motorcycle registration
- Matters related to childrearing allowances and medical subsidies
- Matters related to applications for and issuance of My Number cards
- Consultation on tax payments and health insurance premiums

Taito City Night & Holiday Children's Clinic

Medical treatment is available for children fifteen years of age or younger for sudden illnesses that can be handled without hospitalization.

Location: Inside Eiju General Hospital, 2-23-16 Higashi-Ueno, Taito-ku

Tel: 03-3833-8381

Hours:

- Monday through Saturday (except on national holidays and during the yearend/New Year's holidays): 6:45 to 9:45 p.m. (treatment from 7 to 10 p.m.)
- Sundays, national holidays, Obon holidays (August 14–16), and during the yearend/New Year's holidays (December 29 to January 3): 8:45 a.m. to 9:45 p.m. (treatment from 9 a.m. to 10 p.m.)

Note: Consultation hours may be subject to change during the Obon holidays and yearend/New Year's holidays.



You can also access the website by scanning this code.

Find a Hospital

You can search for hospitals through Himawari, a service run by the Tokyo Metropolitan Government. They will tell you the location, telephone number, hours and medical departments of the hospital.

◇ **Telephone**

Languages: English, Chinese, Korean, Thai and Spanish

Hours: 9 a.m. to 8 p.m.

Tel: 03-5285-8181

◇ **Internet** (English, Chinese and Korean)

URL: <http://www.himawari.metro.tokyo.jp/>



You can also access the website by scanning this code.

Some Service Counters Have Extended Hours on Wednesdays

Extended hours: Until 7 p.m.

Available service counters: Taito City Office (4-5-6 Higashi-Ueno, Taito-ku)

- 1F: ○ Family Registration Residents' Service Section
- 2F: ○ National Health Insurance Section ○ Handicapped Welfare Section ○ Nursing Care Insurance Section ○ Senior Citizens' Welfare Section ○ Preventive Care & Community Support Section
- 3F: ○ Tax Administration Section ○ Collection Section ○ National Pension Subsection, Residents' Affairs Section
- 6F: ○ Child Care Section ○ After-School Affairs Subsection ○ Child-Rearing & Youth Support Section

Residents' Offices

- Seibu (West) Residents' Office (3-1-30 Shitaya, Taito-ku)
- Hokubu (North) Residents' Office (4-48-1 Asakusa, Taito-ku)
- Nambu (South) Residents' Office (1-10-12 Kotobuki, Taito-ku)

Taito City's Website Is Viewable in Various Languages

The Taito City website can be viewed in 103 languages.
Languages: English, Chinese (simplified and traditional), Korean, French, Indonesian, Malay, Thai, etc.

▶ **Procedure**

1. Click the "Multilingual" button on the upper right side of the website

"Multilingual" button



2. Choose a language

Note: Since the translation is automated, the text may not be entirely accurate in some cases.

Inquiries: Public Relations Section, **Tel:** 03-5246-1021

Consultation about Life in Japan

▶ **Foreign Residents' Consultation Center**

If you have any problems or concerns, please feel free to consult the Foreign Residents' Consultation Center.

You can talk to a consultant directly on the following days.

Language	Days	Hours
Chinese	First, second and third Thursdays	10 to 11:30 a.m.
English	First and third Thursdays	10 to 11:30 a.m.
Korean	First and third Thursdays	2 to 3:30 p.m.

Location: Residents' Consultation Office (Taito City Office 1F)

Inquiries: Residents' Consultation Office, Residents' Counseling Section

Tel: 03-5246-1025

Japanese-Language Classes

Taito City offers Japanese-language classes. Individuals aged fifteen and older who graduated from junior high school and reside in, work in or attend school in Taito City are eligible for these classes.

Please apply by December 27 (Friday) if you are interested.

Your residence card is required.

Time: 9:30 to 11:45 a.m.

Days: Wednesdays and Fridays

Location: Kojima Social Education Hall (1-5-2 Kojima, Taito-ku)

Fee: ¥2,400 (for textbooks)

There are also volunteer groups in Taito City that offer Japanese language study support.

For details such as application methods, contact the number below or see the Taito City website.

Inquiries:

Residents' Affairs Section

Tel: 03-5246-1126



Taito City
Office Japanese
Language Classes



Japanese
Language Study
Support Group

We've Created Pamphlets about Disaster Prevention and Crime Prevention. Please make use of them.

1) Taito City Safety and Security Handbook

This handbook provides countermeasures that your household can take to protect yourself in an earthquake, against crime and other situations in an easy-to-understand format. Please use this book to decide on which actions to take when disasters strike, to make routine preparations, and take countermeasures against various crimes, etc., in case the need arises.



2) Taito City Disaster Preparedness Map

This map lists citywide temporary meeting points, evacuation shelters, evacuation sites and disaster preparedness-related facilities. Be sure to confirm evacuation methods and routes from your home.



3) Taito City Flood Hazard Map

This flood hazard map indicates the flood range and depth of floods, either due to the Arakawa River overflowing or because of heavy rainfall. Please use it to confirm evacuation routes and swiftly respond in times of emergency.



Distribution location: Crisis and Disaster Management Section, Taito City Office 10F

Tel: 03-5246-1094

Visit the Shitamachi Museum

The museum displays items reflecting the lifestyle of people in Tokyo's shitamachi (downtown) area, as well as reproductions of row houses from the Taisho Era. Please come experience the shitamachi way of life for yourself.

Hours: From March to October, 9:30 a.m. to 5:30 p.m. (admission until 5 p.m.), and from November to February, 9:30 a.m. to 4:30 p.m. (admission until 4 p.m.)

Closed: Mondays (if it is a national holiday, the museum will be open on Monday and closed the following day), during the yearend/New Year's holidays, and on special inventory days

Admission: Adult: ¥300 (¥200); elementary, junior high, and high school students: ¥100 (¥50)

Notes:

1. The figures in parentheses () are for groups of twenty persons or more.
2. Admission is free for individuals with a *Handbook for the Disabled* or special medical treatment recipient certificate and the person accompanying them.
3. On Saturdays, admission is free for elementary or junior high school students who live or go to school in Taito City and the person accompanying them.

Location: 2-1 Ueno Koen, Taito-ku 110-0007, Tel: 03-3823-7451

URL: <http://www.taitocity.net/zaidan/shitamachi>

Access:

- A three-minute walk from Keisei Ueno Station on the Keisei Main Line
- A five-minute walk from Ueno Station on the JR lines, Tokyo Metro Ginza and Hibiya lines
- A five-minute walk from Ueno-Hirokoji Station on the Tokyo Metro Ginza Line
- A five-minute walk from Yushima Station on the Tokyo Metro Chiyoda Line
- A five-minute walk from Ueno-Okachimachi Station on the Toei Oedo Line



You can also access the website by scanning this code.



An alley between row houses

Do You Know about the Child Dining Rooms and Study Support Services Local Groups Offer?

What are “child dining rooms”?

Free, nutritionally balanced meals are provided for children who must eat by themselves for reasons such as the work schedules of their parents/guardians.

About study support

Places for studying are provided for children who do not have anyone to help their homework or who find studying by their own to be difficult. Free teaching is also offered.

Group name	Content	Location	Date and Time
NPO Network for Supporting Childrearing in Taito City	Study support	Kodomo Gokurakudo (Children's Paradise Hall) (1-8-4 Kiyokawa)	Every Tuesday and Thursday from 4 to 7 p.m.
		Nippon Holiness Kyodan Ueno Church (4-12-1 Matsugaya)	Every Wednesday from 4 to 7 p.m.
	Child dining rooms	Kodomo Gokurakudo (Children's Paradise Hall) (1-8-4 Kiyokawa)	Every second Tuesday and fourth Thursday from 6 to 8 p.m.
		Nippon Holiness Kyodan Ueno Church (4-12-1 Matsugaya)	Every third Wednesday from 6 to 8 p.m.
NPO Second Harvest Japan	Study support and child dining rooms	Second Harvest Japan Kid's café (4-4-4, 1F, Asakusabashi)	Every Thursday and Friday from 1:30 to 6 p.m. Every Saturday from 1:30 to 4 p.m.
Social Welfare Service Corporation Airindan	Study support (meals offered)	Space Sakura	Every Monday, Wednesday and Friday from 4 to 7 p.m.
	Child dining rooms		Every second Friday from 6 to 8 p.m.
Tokyo Health Cooperative Association	Study support	Please call 080-5449-8023 for the location.	Every Tuesday and Thursday from 3:30 to 6 p.m.
	Child dining rooms		Every third Tuesday and Thursday from 3:30 to 6 p.m.

Note: The city supports the efforts made by all such groups.

Inquiry: Child-Rearing & Youth Support Section, **Tel:** 03-5246-1237

Short-Term Childcare

To mothers and fathers: Would you like to take a break? We provide childcare services by the hour.

Note: The service is available regardless of the reason, such as work.

Eligibility	Children between one and six years old (preschoolers) who live in Taito City, are healthy and are able to adjust to group activities
Days and hours	Year-round from 9 a.m. to 5 p.m. except for January 1 through 3
Maximum use	Up to eight times per child per month.
Fee	¥500 per hour There is a separate fee for lunch (¥400) and snacks (¥100). Note: The Nihonzutsumi Child/Family Assistance Center (Yanaka Branch) does not provide lunch and snacks.
Location	1) Horai Childrearing Support Center Welfare Plaza Taito Seihokai 2F, 2-14-7 Kiyokawa, Taito-ku 2) Nihonzutsumi Child/Family Assistance Center, Yanaka Branch 1F, Short-Term Childcare Room, 2-9-21 Yanaka, Taito-ku
Other	Registration in advance is required.



Inquiries: Horai Childrearing Support Center, **Tel:** 03-5824-5624 (9 a.m. to 5 p.m. except from January 1 to 3)
Nihonzutsumi Child/Family Assistance Center, Yanaka Branch, **Tel:** 03-3824-5531 (9 a.m. to 5 p.m. except from January 1 to 3)