



TAITO CITY LIFE NEWS

2025.12 Vol. 41

Published by: Human Rights and Diversity Promotion Section, General Affairs Division, Taito City Office

4-5-6 Higashi-Ueno, Taito-ku 110-8615, Tel: 03-5246-1116

https://www.city.taito.lg.jp/kurashi/foreigner/jigyoannai/life_news.html

The City Office offers multilingual interpretation services via tablet devices. Please inquire about this at the service window you visit for procedures.

The hours these services are available differ depending on the language.

<https://www.city.taito.lg.jp/kurashi/foreigner/sodan/sodan.html>

Supported languages: English, Chinese, Korean, Spanish, Portuguese, Vietnamese, Nepali, Filipino (Tagalog), Thai, French, Russian, Hindi, Indonesian, Khmer, Burmese and Malay.



Please check the hours these services are available here



Come Take Part in Neighborhood Association Activities!

Neighborhood associations are resident organizations that promote exchanges among the people of the community and work together to create safe and comfortable neighborhoods. Neighborhood associations are always happy to welcome new participants.

Here are some neighborhood association activities.

Purpose	Activity
Help each other in times of need	Earthquakes, heavy rains and other disasters are becoming more frequent in Japan. It is vital to maintain relationships with your neighbors so that every resident, Japanese and foreign, can help each other in times of trouble.
Disaster preparation drills	Some neighborhood associations conduct disaster preparation drills (for earthquakes, typhoons, etc.) such as safe evacuation training. Practice together with the people near you!
Preparations for disasters	Some neighborhood associations have prepared water, food and toilets that can be used even if the water supply is cut, and other disaster preparation measures.
Child safety	Neighborhood association members stand on the street to check for safety to ensure that children can commute to and from school safely every day.
Neighborhood safety (crime prevention patrols)	Neighborhood association members patrol the town to check for safety and prevent accidents and crimes. If there is an accident, everyone is notified.
Cleaning	Community cleanup, recycling, collection of resources, etc.
Festivals and other events	There are many events such as the Bon-odori, portable shrine parades of festivals, New Year's mochi-making, and field days.

Anyone is welcome to join, so just ask a neighbor for more information. You can also consult with the city office.

Inquiries: Residents' Affairs Section, **Tel:** 03-5246-1122

About Declaration of Resident Tax (special city tax and Tokyo metropolitan resident tax)

Your resident tax is the tax assessed by the city or municipality where you reside, and is the source of funding for administrative services the community conducts. All individuals having income of a certain level and above must pay tax.

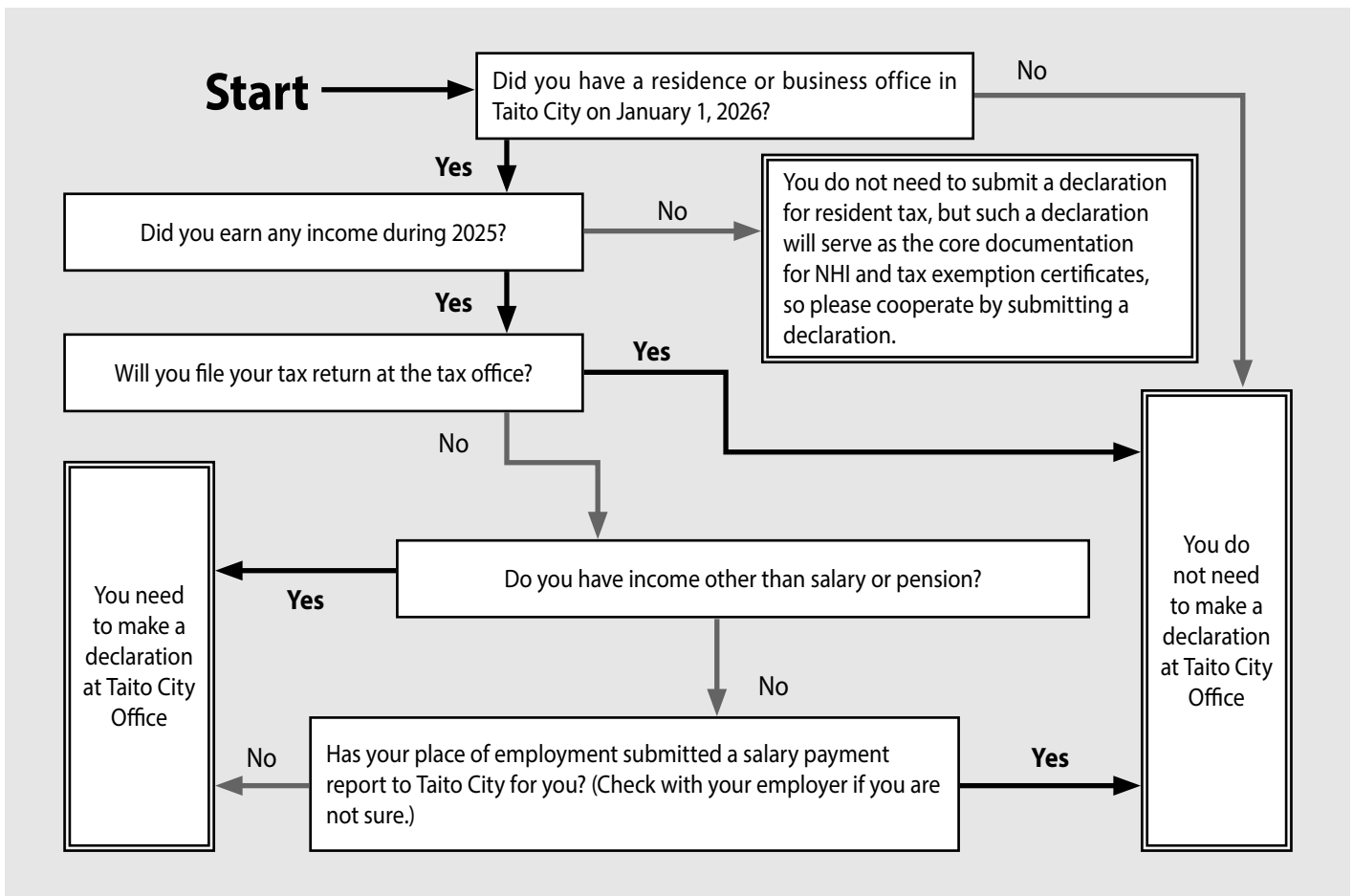
Every year by March 15, you must submit a declaration of your income to the tax office or city office for the period from January 1 to December 31 of the previous year to the city or municipality where you resided on January 1 of that year. Your resident tax is calculated on the basis of the income declaration form

you submitted.

Taito City sends a declaration form to individuals who may need to make a tax declaration to the city office. Please fill in the necessary information and submit or mail it to the Taxation Subsection. Please contact the number below if you do not receive a declaration form or have any other questions.

Please note that if you submitted a declaration of your income tax to the tax office, you are not required to submit a resident tax declaration.

★Individuals who need to submit a declaration . . . Please use the below chart as a reference



Tax declarations are also accepted via postal mail. Please use the enclosed return envelope.

Inquiry: Taxation Subsection, Tax Administration Section, **Tel:** 03-5246-1103 to 1105

Ask Questions 24/7!

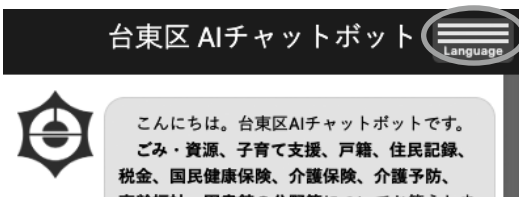
▶ Try the AI Chatbot

How to Use

- (1) Click the mark at the bottom right of the Taito City website.



- (2) Click the "Language" button on the upper right of the page that opens. Choose your preferred language.



- (3) Ask a question.

Languages available: English, Chinese (simplified and traditional), Korean, Vietnamese, Filipino (Tagalog), Nepali, Thai, French, Burmese, Uzbek, Indonesian, Russian, Mongolian, Ukrainian

Inquiries: Public Relations Section

Tel: 03-5246-1023

Please Have a Look at the Taito City Newsletter



Various notifications from the Taito City Office are written in the Taito City newsletter.

The newsletter can be viewed in various languages, such as English, Chinese (simplified and traditional),

Korean, Thai, and Indonesian if viewed from the city website or smartphone application "Catalog Pocket."

Note: To read via Catalog Pocket, search for "Taito City" after scanning the two-dimensional code and downloading the app.

Inquiries:
Public Relations Section

Tel: 03-5246-1021



Android



iOS

Taito City's Website Is Viewable in Various Languages

The Taito City website can be viewed in 109 languages.

Languages: English, Chinese (simplified and traditional), Korean, French, Indonesian, Malay, Thai, etc.

▶ Procedure

1. Click the "Foreign Language" button on the upper right side of the website

"Foreign Language" button



2. Choose a language



Inquiries: Public Relations Section,

Tel: 03-5246-1021

View the Taito City Official YouTube Channel

The public relations programs (news) and other videos the city produces are streaming on YouTube. You can display subtitles using YouTube's automatic translation function:



- (1) Click on the caption button on the bottom right of the video.



- (2) Click on the button, click on "Subtitles/CC," and then select "automatic translation" and choose a language.



Notes:

1. Only English-language translations are available when playing videos on smartphones and the like.
2. Since the channel uses YouTube's automatic translation function, the translation may not be accurate.
3. Depending on the video, the automatic translation function may not be available.

Inquiries: Public Relations Section, **Tel:** 03-5246-1041

Service Counters Open on Second Sundays for Partial Services

Hours: 9 a.m. to 5 p.m.

Location: Taito City Office 1F

Services available:

- ⊙ Matters related to family registry notifications
- ⊙ Issuance of residence records, personal seal registration certificates, and family registry certificates
- ⊙ Matters related to notifications of moving in/out and National Health Insurance enrollment
- ⊙ Matters related to personal seal registration and annulment
- ⊙ Payments for taxes or health insurance premiums and matters related to motorcycle registration
- ⊙ Matters related to various childrearing allowances and medical subsidies for children
- ⊙ Matters related to applications for and issuance of Individual Number cards
- ⊙ Matters related to applications for and issuance of special permanent resident certificates
- ⊙ Consultation on tax payments and health insurance premiums
- ⊙ Matters related to issuance of residence tax (tax exemption) certificates
- ⊙ Matters related to issuance of a *Mother and Child Health Handbook*
- ⊙ Sales of one-month ticket, coupon tickets and one-day ticket for the Taito City Circular Route Bus, Megurin

Searching for a Hospital?

◇ **Phone**

You can search for a hospital through Himawari—the Tokyo Metropolitan Health & Medical Information Center.

Languages: English, Chinese, Korean, Thai and Spanish

Hours: 9 a.m. to 8 p.m. **Tel:** 03-5285-8181

◇ **Online**

You can search for a hospital through the Medical Information Net (NABII).

(Available in English, Chinese and Korean.)
<https://www.iryu.teikyouseido.mhlw.go.jp>



You can also access the website by scanning this code.

Some Service Counters Have Extended Hours on Wednesdays

Extended hours: Until 7 p.m.

Available service counters:

Taito City Office (4-5-6 Higashi-Ueno, Taito-ku)

1F: ⊙ Family Registration Residents' Service Section

2F: ⊙ Nursing Care Insurance Section

⊙ Senior Citizens' Welfare Section

⊙ Handicapped Welfare Section

⊙ National Health Insurance Section

3F: ⊙ National Pension Subsection, Residents' Affairs Section

⊙ Collection Section ⊙ Tax Administration Section

6F: ⊙ Child-Rearing & Youth Support Section

⊙ After-School Affairs Subsection ⊙ Child Care Section

Residents' Offices

⊙ Seibu (West) Residents' Office (3-1-30 Shitaya, Taito-ku)

⊙ Nambu (South) Residents' Office (1-10-12 Kotobuki, Taito-ku)

⊙ Hokubu (North) Residents' Office (4-48-1 Asakusa, Taito-ku)

Taito City Night & Holiday Children's Clinic

Medical treatment is available for children fifteen years of age or younger for sudden illnesses that can be handled without hospitalization.

Location: Inside Eiju General Hospital, 2-23-16 Higashi-Ueno, Taito-ku

Note: Please come to the emergency reception desk on the first floor.

Tel: 03-3833-8381

Note: Since you may be directed to a specialized medical facility, please be sure to call in advance.

Hours:

- Monday through Saturday (except on national holidays and during the yearend/New Year's holidays):

6:45 to 9:45 p.m. (treatment from 7 to 10 p.m.)

- Sundays, national holidays, *Obon* holidays

(August 14–16), and during the year-end/

New Year's holidays (December 29 to January 3): 8:45 a.m. to 9:45 p.m. (treatment from 9 a.m. to 10 p.m.)



You can also access the website by scanning this code.

Consultation about Life in Japan

► **Foreign Residents' Consultation Center**

If you have any problems or concerns, please feel free to consult the Foreign Residents' Consultation Center.

You can talk to a consultant directly on the following days.

Language	Days	Hours
Chinese	First, second and third Thursdays	10 a.m. to noon
English	First and third Thursdays	10 a.m. to noon
Korean	First and third Thursdays	2 to 4 p.m.

Location: Residents' Consultation Office (Taito City Office 1F)

Inquiries: Residents' Consultation Office, Residents' Counseling Section

Tel: 03-5246-1025

Follow the Rules When Using Parks!

- 1 Do not litter**

- 2 Ball sports are only permitted in the sports corner**

- 3 Do not let your pets run freely, and always clean up after your pet**

- 4 Do not feed pigeons, cats and other stray/wild animals**

- 5 Do not make loud noises or talk loudly in the morning and at night**

- 6 Fireworks, barbecues and other activities that require fire are not permitted**

- 7 Smoking is prohibited in the children's playground and other areas where children gather**


Please visit the website for more information



Inquiries: Park Section
Tel: 03-5246-1321

Reminder to Enroll in National Pension

The National Pension System provides a pension to enrolled members who meet certain conditions when they reach old age, become disabled due to injury or illness, or die. All residents of Japan aged 20 to 59 must join, except those employed by a company who are enrolled in their firm's employee pension program. This includes foreign residents of Japan, who must pay premiums just like any other resident.

The National Pension premium is 17,510 yen (uniform monthly amount for FY2025).

There are exemption programs for students, individuals with low incomes, and others who have difficulty paying premiums. You will need to apply and be approved for an exemption. Apply at the Taito City Office or a pension office.

If you have paid insurance premiums for a total of 120

months (10 years) or more, including months for which you received an exemption, you will be eligible to receive the basic old-age pension from the age of 65. Even if you are not eligible to receive the pension, if you are a foreign national and have paid premiums for a total of at least six months, you can apply for a lump-sum withdrawal payment when leaving Japan.

For more information, please call the Ueno Pension Office (03-3824-2511) or visit the Japan Pension Service website (<https://www.nenkin.go.jp/international/index.html>).

Inquiries: National Pension Subsection, Residents' Affairs Section

Tel: 03-5246-1262



You can also access the website by scanning this code.

About the Taito City Consumer Life Center

Ask for advice in these situations!

- I encountered a problem or felt something was off when signing a contract or shopping.
- If you are billed for something you didn't purchase
- If an accident occurs when using a product

● Who can use this service?

Anyone who lives, works or goes to school in Taito City

● Consultation days and hours

Monday to Friday (excluding national holidays and the year-end/New Year's holidays)

9 a.m. to 4 p.m.

● Consultation procedures

Call or come to the Taito City Consumer Life Center

Tel: 03-5246-1133

Location: Residents' Counseling Section (No. 7 service counter, Taito City Office 9F)

● Consultation is free of charge. All matters are kept strictly confidential.

Inquiries:

Consumer Desk, Residents' Counseling Section

Tel: 03-5246-1144



You can also access the website by scanning this code.

Let's Study Japanese!

● Children's Japanese Class

The children's Japanese class teaches the basics of the Japanese language to elementary and junior high school students whose native language is not Japanese.

Class schedule (subject to change):

December 7, 14, and 21 (2025)

January 11, February 1, 8, 15, and 22, March 1, 8, 22, and 29 (2026)

Note: All classes are held on Sundays.

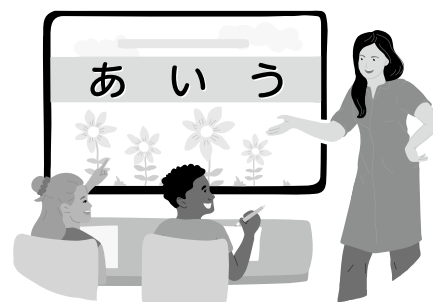
Time: 9:30 to 11:30 a.m.

Location: Hanakawado 1-chome facility (1-14-16 Hanakawado, Taito-ku)

Fees: Free

Applications: Accepted starting on Tuesday, November 4.

Note: The application process will be stopped when we reach capacity. Please note that first-time applicants will be given priority if there are more applications than capacity.



Please use the QR code to visit this website for more details.

● Japanese-Language Study Support Volunteer Groups

There are volunteer groups in Taito City that will help you study the Japanese language. You don't need to register or make a reservation; just check the schedule and show up at the time and place the group is meeting. For more information, please visit the city website.

Note: We are also recruiting Japanese-language instructors and other staff.



Please use the QR code to visit this website for more details.



Japanese-Language Study Support Volunteer Group Information

Note: The venue and schedule are subject to change. Make sure to check the website for the latest information before participating.

Group name	Day of the week and time	Level	Fees
Yamato-kotoba Club	Wednesdays 7 to 9 p.m.	Beginner to advanced	Fees
	(Please inquire about personal lessons)	Basic to advanced	Fees
Taito Nihongo Lessons	Thursdays 10 to 11:30 a.m. (Punctuality is strictly enforced.)	Beginner	Fees
Morning Class	Saturdays 9:30 to 11:30 a.m.	Beginner to advanced	Fees
Nihongo Gakushu Ichiba	Thursdays 1:30 to 3:30 p.m.	Basic to intermediate	Club fee: 400 yen a month Payments are collected every three months. Once you pay the club fee, you can participate in any class. Textbook fees: 1,940 yen
	Tuesdays 6 to 8 p.m.	Basic to beginner	
	Saturdays 1:30 to 3:30 p.m.	Basic to advanced	
Tanoshii Nihongo Hiroba	Fridays 2 to 4 p.m.	From beginner level	Fees
Asakusa Nihongo Dojo	Saturdays 1:30 to 4:30 p.m. (There is a break at 3 p.m.)	Basic to advanced	100 yen per session (first session is free)

This is a list of volunteer groups where you can learn the Japanese language.